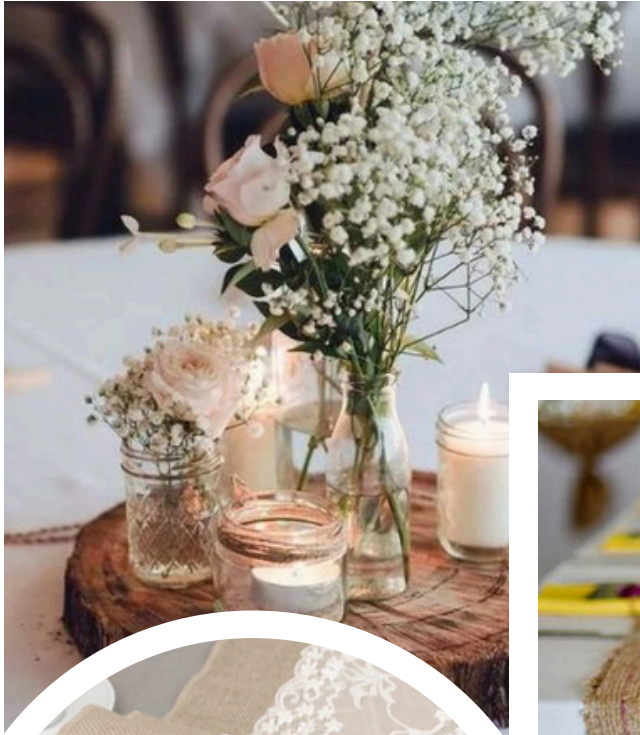
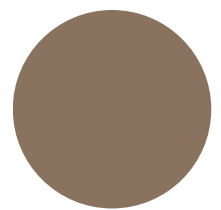
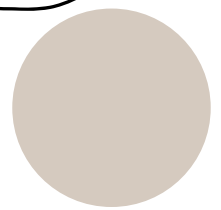


# Burlap & Lace

Rustic burlap, classic lace & sage greenery



Shhh



SIMPLY elegant™

### Ceremony:

A gorgeous wooden archway with white chiffon hung and pulled to the side with silk eucalyptus. Baby's breath tied to the aisle chairs with thick burlap ribbon.

### Cocktail:

White polyester linen with a mason jar full of fair lights with a silk white floral arrangement

### Guest Tables:

White polyester linen and a burlap table runner on a round 5' table with classic gold chivari chairs and a cream seat cushion (sits 8).

Place setting with gold feathered rim charger plates and sage green majestic napkins tied with a lace ribbon.

Centerpieces consisting of a round wooden slice with 8 various vintage bottle vases with simple floral arrangements surrounded by five clear votives.

### Head Table:

Ash burlap linen and a white lace runner on two long tables with classic gold chivari chairs and cream seat cushions (sits 8).

Place setting with gold feathered rim charger plates and sage green majestic napkins tied with a lace ribbon.

Centerpiece consisting of two cascading floral arrangements on either side of the head table with a trilogy of vintage bottles with fairy lights inside and a "Mr & Mrs" wooden letter sign in the middle.

### Accessory Tables:

White polyester linens for the podium and cake table.

Ash burlap linen and white lace table runner for the gift table with silk eucalyptus with fairy lights and a white wooden card box atop.

The images above are meant to give a visual sense of the overall style, color palette, and atmosphere we're aiming to create. The actual product may vary slightly from the images in the moodboard.

\*\*Prices are subject to change. Custom decor is available upon request.\*\*



SIMPLY  
**elegant**