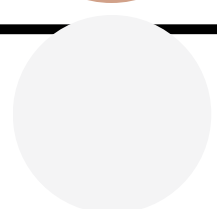
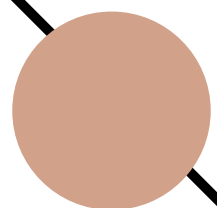
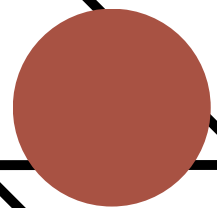
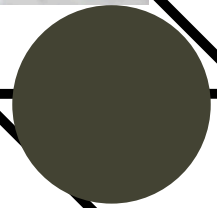
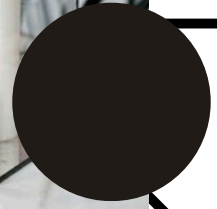


Industrial Chic

White & black with a hint of copper



SIMPLY
elegant™

Ceremony:

A gorgeous wooden archway with Italian Ruscus garland strung from it and a trilogy of black matte taper candle holders with LED taper candles on either side.

Cocktail:

White polyester linens with two black matrix lanterns with LED wax candles inside.

Guest Tables:

White polyester linen on a round 5' table with stylish clear acrylic ghost chairs (sits 8).
Place setting with black rim glass charger plates and copper satin napkins.
Centerpieces consisting of a wreath of silk Italian Ruscus with a trilogy of black matte taper candle holders with LED taper candles in the center and surrounded by copper vivi votives with tea lights.

Head Table:

White polyester linen on two long tables with stylish clear acrylic ghost chairs (sits 8).
Place setting with black rim glass charger plates and copper satin napkins.
Centerpieces consisting of runs of Italian Ruscus with black matte taper candle holders with LED taper candles and copper vivi votives with tea lights throughout.

Accessory Tables:

White polyester linen on the podium, cake table and gift table.
A trilogy of black matte taper candle holder with LED taper candle, large black matrix lantern, and copper vivi votive with tea light on each table.

The images above are meant to give a visual sense of the overall style, color palette, and atmosphere we're aiming to create. The actual product may vary slightly from the images in the moodboard

Prices are subject to change. Custom decor is available upon request.

